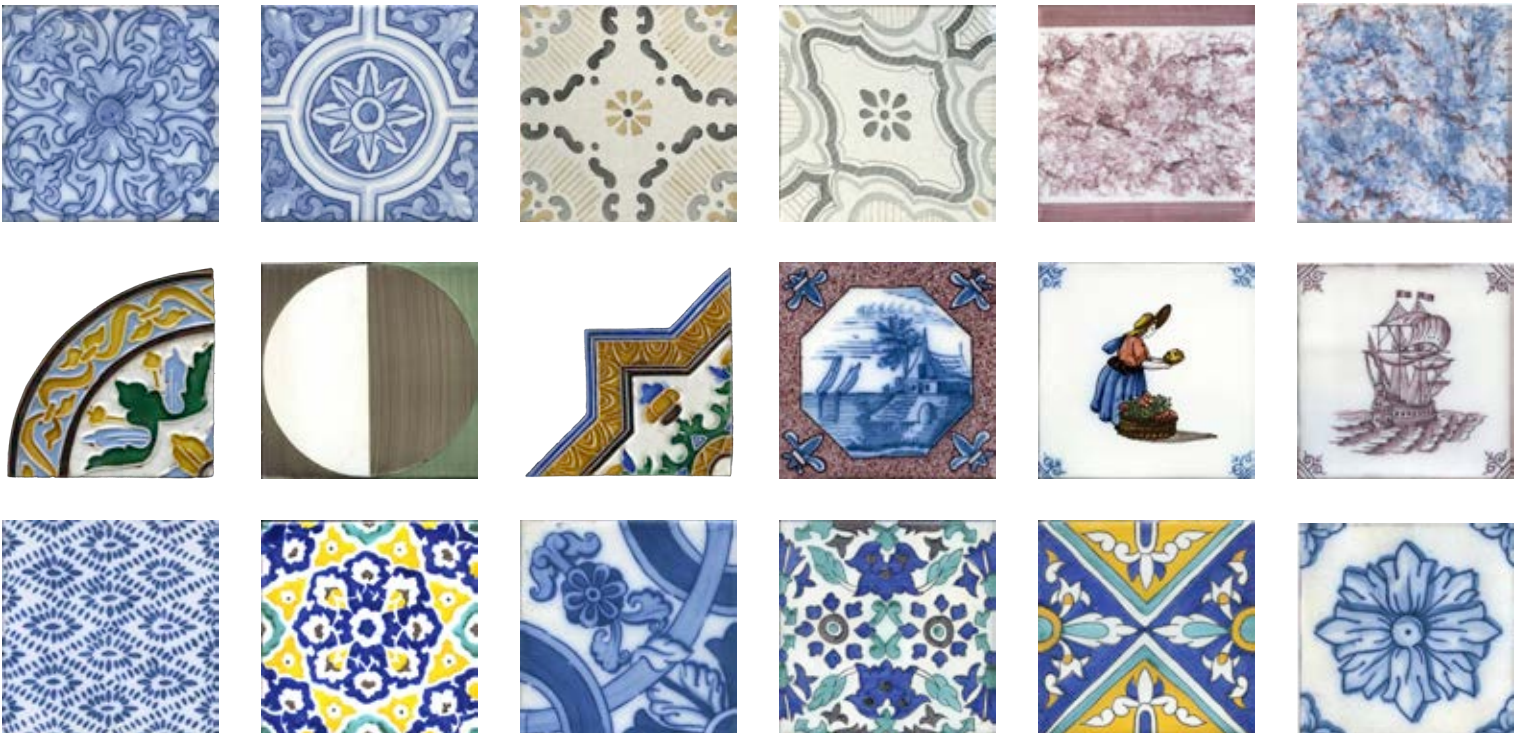


TILE GUILD INC



C U E N C A

C o l l e c t i o n

Cuenca's medieval old town, with its narrow, winding streets, feels like a step back in time. Its iconic Hanging Houses dramatically cling to cliffs above the Huécar River gorge, a UNESCO World Heritage Site. The city is also famous for its richly glazed azulejos - tiles that blend Moorish, Gothic, and Renaissance styles into intricate designs.

Our Cuenca collection features ornaments composed of four individual hand-painted tiles that come together to recreate these timeless patterns.



TGCO 9



TGCO 4



TGCO 8



TGCO 7



TGCO 5



4 pc ornament approximately 11 ½" x 11 ½"





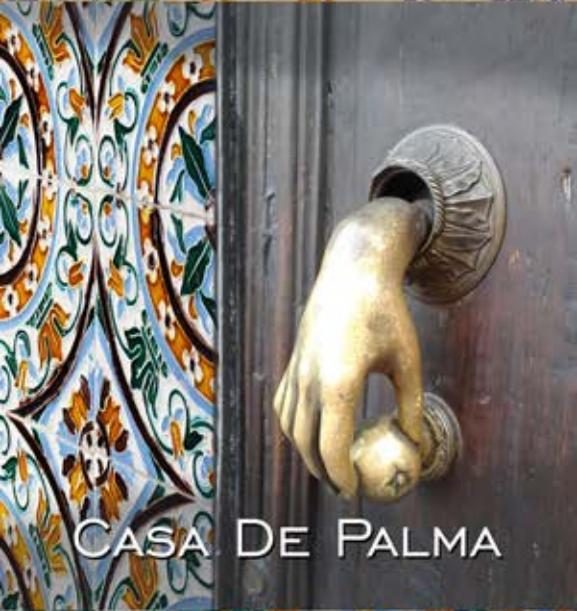
CASA DE PALMA

C o l l e c t i o n

Palma de Mallorca is a stunner. Rising in honey-colored stone from the broad waters of the Badia de Palma, this enduring city dates back to the 13th-century. Wander in any direction from the awe-inspiring Gothic Cathedral at its geographic and historical heart and you'll find bent medieval streets lined with aristocratic townhouses.

One of these is our Casa de Palma.

As you browse this collection you might think "Why are they painted so slovenly? Why do the colors not always stay in their cells? why are there drips, crackled and missing glazes?" That is part of our intent, to add age, patina and history to these handcrafted replicas.



TGCDP 7



TGCDP 5



TGCDP 3



TGCDP 1



TGCDP 2



TGCDP 18



TGCDP 9



TGCDP 10



TGCDP 11

Available in 5.75" x 5.75"

SEVILLA

C o l l e c t i o n

Seville is a city where the art of tilework is deeply woven into its cultural identity. Known for its vibrant azulejos, the city has been a center of ceramic production since the Islamic period. The famous Triana district, once filled with kilns and artisan workshops, played a key role in shaping Seville's tile legacy.

Seville's tile art blends Moorish, Renaissance, and Baroque influences, reflecting its rich and layered history. Today, the city continues to celebrate its ceramic heritage through museums, workshops, and architectural masterpieces.



Madrid



Segovia



Cuernica



Tenerife



Catalonia



Galicia



Oviedo



Zaragoza



Palma



FAIENCE

C o l l e c t i o n

Faience is a historic ceramic technique known for its glossy tin-glazed surface and rich blue decoration. Originating in the Islamic world and later flourishing in Europe, it became especially prominent in countries like France, Italy, Spain and Portugal. Each faience tile reflects skilled craftsmanship and centuries of decorative tradition. Faience brings enduring beauty and cultural depth to both traditional and contemporary spaces.



TGF 38



TGF 46



TGF 49



TGF 08



TGF 06



TGF 10



TGF 01



TGF 13



TGF 33



TGF 32



TGF 28



TGF 22

Available in 6" x 6"

LISBOA

C o l l e c t i o n

Lisbon, built across seven hills, is a city where hand-painted tiles - azulejos - adorn façades, stairways, and fountains. Introduced to the Iberian Peninsula during the Islamic rule, the art of tile-making was later adapted by the Portuguese, evolving into a distinctive form that blends Moorish geometric patterns with Renaissance and Baroque influences. As vintage eléctrico trams wind through the city's steep streets, they pass buildings clad in intricate tilework. From Alfama to Bairro Alto, azulejos are more than ornament - they are woven into Lisbon's cultural and architectural identity.



TGL 25



TGL 12



TGL 06



TGL 18



TGL N 2



TGL 19a

TGL 19b

Available in 6" x 6"





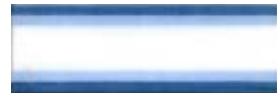
DUTCH

C o l l e c t i o n

Dutch tiles are renowned for their blue and white designs, often depict everyday life, landscapes, and seafaring scenes. Originating in the 16th century, these hand-painted tiles became a symbol of Dutch craftsmanship and decorative art. Their clean, graphic style continues to inspire designers around the world.



TGDB 28



TGDB 29



TGDB 30



TGDPPT 03



Custom 01



Custom 06



TGDF 13



TGDF 09



TGDF 09C



Angel 01



TGDSF 26



TGDBL 08

Sizes by request

DELFT

C O L L E C T I O N

Delft, a charming Dutch city, is world-renowned for its distinctive blue and white ceramic tiles. Inspired by Chinese porcelain and crafted since the 17th century, Delftware tiles feature delicate scenes, floral motifs, and geometric patterns that capture the elegance of Dutch craftsmanship.



TGDFD 1



TGDFD 4



TGDFD 8



TGDS 1



TGSC 6



TGSC 8



TGSC 10



TGDFD 9



TGDF 5



TGDLP 3



TGDLP B S



TGDLP 15





DAMASCUS

C o l l e c t i o n

Damascus, one of the oldest continuously inhabited cities in the world, is celebrated for its rich tradition of tilework shaped by centuries of Persian, Byzantine, Arab, and Ottoman influence. Its hand-painted ceramics often feature intricate geometric designs and stylized floral motifs, adorning mosques, palaces, and private homes. This enduring art form reflects Damascus's role as a cultural and artistic hub along historic trade routes.



TGDMS 1a



TGDMS 1c



TGDMS 1b



TGDMS 2c



TGDMS 2a



TGDMS 2b



TGDMS 5a



TGDMS 5c



TGDMS 5b

Available in 6" x 6"

SILK ROAD

C o l l e c t i o n

The Silk Road carried not only goods, but also tilemaking traditions across continents. Glazed ceramics and intricate patterns spread from Persia to the Mediterranean, blending styles and cultures. This shared legacy still decorates mosques, palaces, and markets from Samarkand to Seville.



TGSR 26



TGSR 19



TGSR 21



TGSR 10



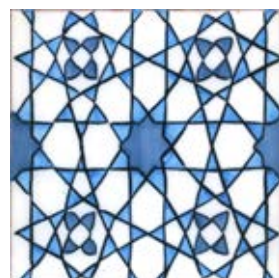
TGSR 11



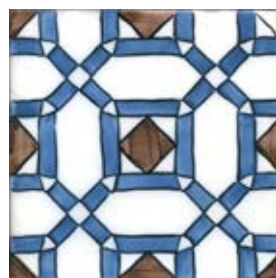
TGSR 5



TGSR 13



TGSR 14



TGSR 9



TGSR 8



TGSR 16



TGSR 2

Available in 6" x 6", 3" x 6", 2" x 6"



ALFAMA

C o l l e c t i o n

Alfama, Lisbon's oldest quarter, is a maze of narrow streets where history clings to every wall. Here, traditional azulejos - blue, white and sepia ceramic tiles tell stories of daily life, and maritime heritage. The neighborhood's tilework reflects a blend of Moorish roots and Portuguese craftsmanship. In Alfama, tiles are not just decoration - they are part of the soul of the city.



Alfama 9 Sepia



Alfama 10 Blue



Alfama 9 Blue and Sepia



Alfama 12 Blue and Sepia



Alfama 12 Sepia and Blue



Alfama 12 Blue and Sepia



Alfama 8 Blue



Alfama 4 Sepia and Blue



Alfama 1 Sepia and Blue



Alfama 11 Blue and Sepia



Alfama 2 Sepia



Alfama 7 Blue and Sepia

Available in 6" x 6"

SINTRA

C o l l e c t i o n

Sintra, a picturesque Portuguese town, is renowned for its romantic 19th-century architecture — from fairy-tale castles to ornate palaces like the iconic Pena Palace. A hallmark of these buildings is the exquisite tilework, or azulejos, adorning walls inside and out with vivid patterns and scenes rich in history. These tiles reflect the town's deep artistic heritage and cultural charm.



Sintra 25 bly



Sintra 21 b



Sintra 23 sbl



Sintra 2 Yellow and Blue



Sintra 1 Yellow and Blue



Sintra 3 Yellow and Blue



Sintra 2 Blue and Sepia



Sintra 1 Blue and Yellow



Sintra 3 Sepia



Sintra 9 b



Sintra 11 sbl



Sintra 7 b

Available in 6" x 6"





HAVANA

C o l l e c t i o n

Havana's streets burst with color and character, thanks to the hand-painted ceramic tiles that grace its buildings. These vibrant tiles—adorned with delicate floral designs and intricate geometric patterns are woven into the fabric of the city's architecture. From facades to staircases, they add layers of beauty and history to every corner of the Cuban capital.



Havana 1a



Havana 4b



Havana 17a



Havana 9a



Havana 3a



Havana 12a



Havana 11b



Havana 10b



Havana 5

Available in 6" x 6", 8" x 8"

DOCCIA

C o l l e c t i o n

Located near Florence, the historic Ginori manufactory in Doccia has been a symbol of Italian ceramic excellence since the 18th century. In the mid-20th century, the celebrated designer Gio Ponti brought a fresh vision to Ginori, blending classical Italian motifs with bold modern aesthetics. His collaboration transformed traditional ceramics into sophisticated works of decorative art. Today, Ponti's influence remains deeply embedded in the design legacy of Doccia.



TGD 24



TGD 04



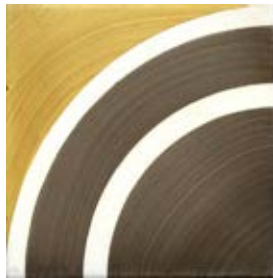
TGD 10



TGD 15



TGD 16



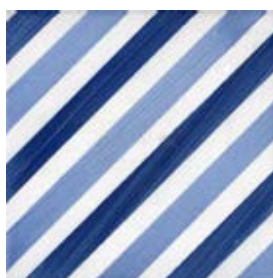
TGD 18



TGD 13



TGD 11



TGD 09





BILTMORE

C o l l e c t i o n

The Biltmore Hotel in Montecito is a historic seaside retreat celebrated for its Spanish Colonial Revival architecture and lush, coastal surroundings. Its iconic Coral Casino Beach & Cabana Club features beautifully hand-painted tiles that evoke the elegance of the Mediterranean. These intricate designs reflect the hotel's legacy, combining artistic detail with classic, enduring style.



TGB 62



TGB 66



TGB 64



TGB 01



TGB 14



TGB 11



TGB 06



TGB 04



TGB 17



TGB 40



TGB 28



TGB 34

Available in 5" x 5", 6" x 6"

MOROCCO

Collection

Moroc, named after the French word for Morocco, is our collection of hand-painted tiles inspired by traditional Moroccan and Tunisian design. Drawing from the rich visual language of zellige intricate geometric patterns, we translate this heritage through brush, not chisel. Bold, rhythmic, and timeless, these tiles bring a touch of Marrakech to contemporary spaces.



TGAN 91



TGAN 86



TGAN 92



TGAN 21



TGAN 12



TGAN 15



TGAN 1



TGAN 50



TGAN 30



TGAN 42



TGAN 20



TGAN 45





PORTUGUESE

C o l l e c t i o n

Portuguese tiles, known as azulejos, are a beautiful and iconic part of Portugal's cultural heritage. These hand-painted ceramic tiles often feature intricate blue-and-white designs and grace the façades of buildings, churches, and public spaces with a timeless artistic elegance.



TGP 23



TGP 38



TGP 39



TGP 04



TGP 08



TGP 03



TGP 09



TGP 10



TGP 12



TGP 5



TGP 33



TGP 06

Available in 5" x 5"

MONET

C o l l e c t i o n

Giverny, a village, a home, its gardens, lily ponds and paintings are a French national treasure.

Less well known are the tiles. These patterns, popular during Monet's lifetime were produced in France and Holland.

Use our Giverny tiles in bathrooms, fireplaces, patios. And like Monet in kitchens!

We use the same techniques as the French originals 19 century. Hand painted.



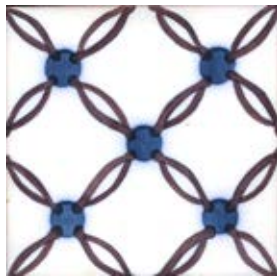
TGMO 26



TGMO 26



TGMO 04



TGMO 10



TGMO 06



TGMO 05



TGMO 07



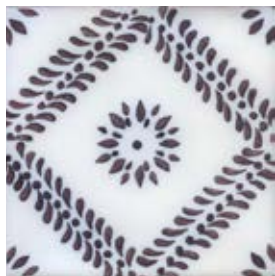
TGMO 08



TGMO 09



TGMO 11



TGMO 12

Available in 4" x 4"





ITALIAN

C o l l e c t i o n

Italy has long been a cradle of ceramic artistry, where tilemaking is both a craft and a cultural legacy. From Renaissance majolica to timeless terracotta, Italian tiles reflect centuries of design, innovation, and regional flair. Hand-painted motifs and rich glazes bring warmth and sophistication to every surface. Today, Italian tilework continues to inspire with its blend of tradition, beauty, and enduring quality.



TGI 01



TGI 06



TGI 08



TGI 10



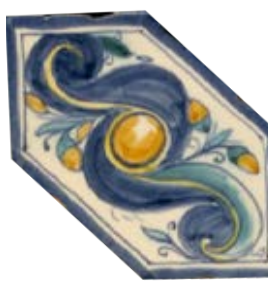
TGI 13



TGI 21



TGI 22



TGI 23



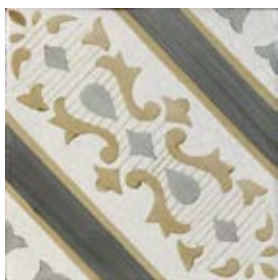
TGI 25

Sizes by request

MARSALA

C o l l e c t i o n

Marsala, a sun-soaked jewel on the coast of Sicily, is famous not only for its rich fortified wine but also for its vibrant cultural heritage. The town's charming cobblestone streets and stunning Baroque architecture tell stories of ancient seafarers and a history shaped by Arab, Norman, and Italian influences. Marsala's hand-painted tiles beautifully reflect this unique blend, often featuring Moorish-inspired patterns and warm terracotta tones. These artisanal designs capture the spirit of Sicily, bringing timeless Mediterranean artistry into every space.



Marsala 1



Marsala 2



Marsala 3



Marsala 4



Marsala 5



Marsala 6



Marsala 7



Marsala 8



Marsala 9

Available in 6" x 6", 8" x 8"





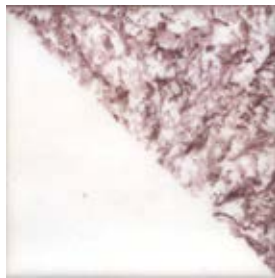
ESPONJAR

C o l l e c t i o n

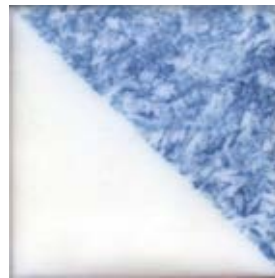
Esponjar (Ceramic Technique):

This technique involves gently dabbing a natural or synthetic sponge dipped in glaze, slip, oxide, or pigment onto the tile's surface. Sometimes, the sponge is also used to lift excess glaze from raised areas, creating a soft, irregular texture.

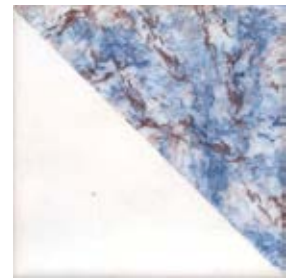
The effect is a beautifully layered, rustic pattern that adds depth and subtle color variations. Esponjar is often employed to evoke natural stone, aged patinas, or rich decorative backgrounds—commonly seen in traditional Mediterranean and folk tile styles.



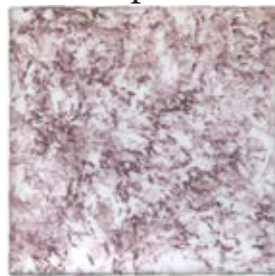
Diaper S



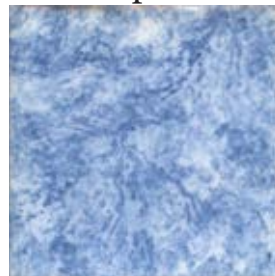
Diaper B



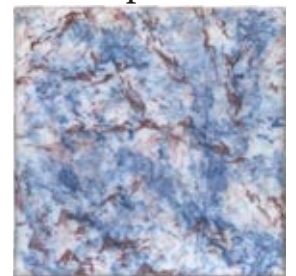
Diaper SB



Field S



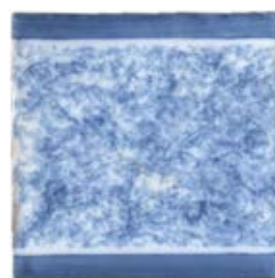
Field B



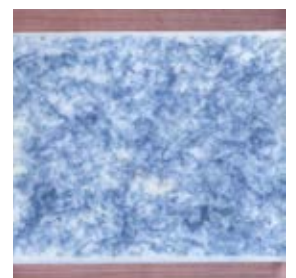
Field SB



Border S



Border B



Custom

Available in all sizes up to 12" x 12"